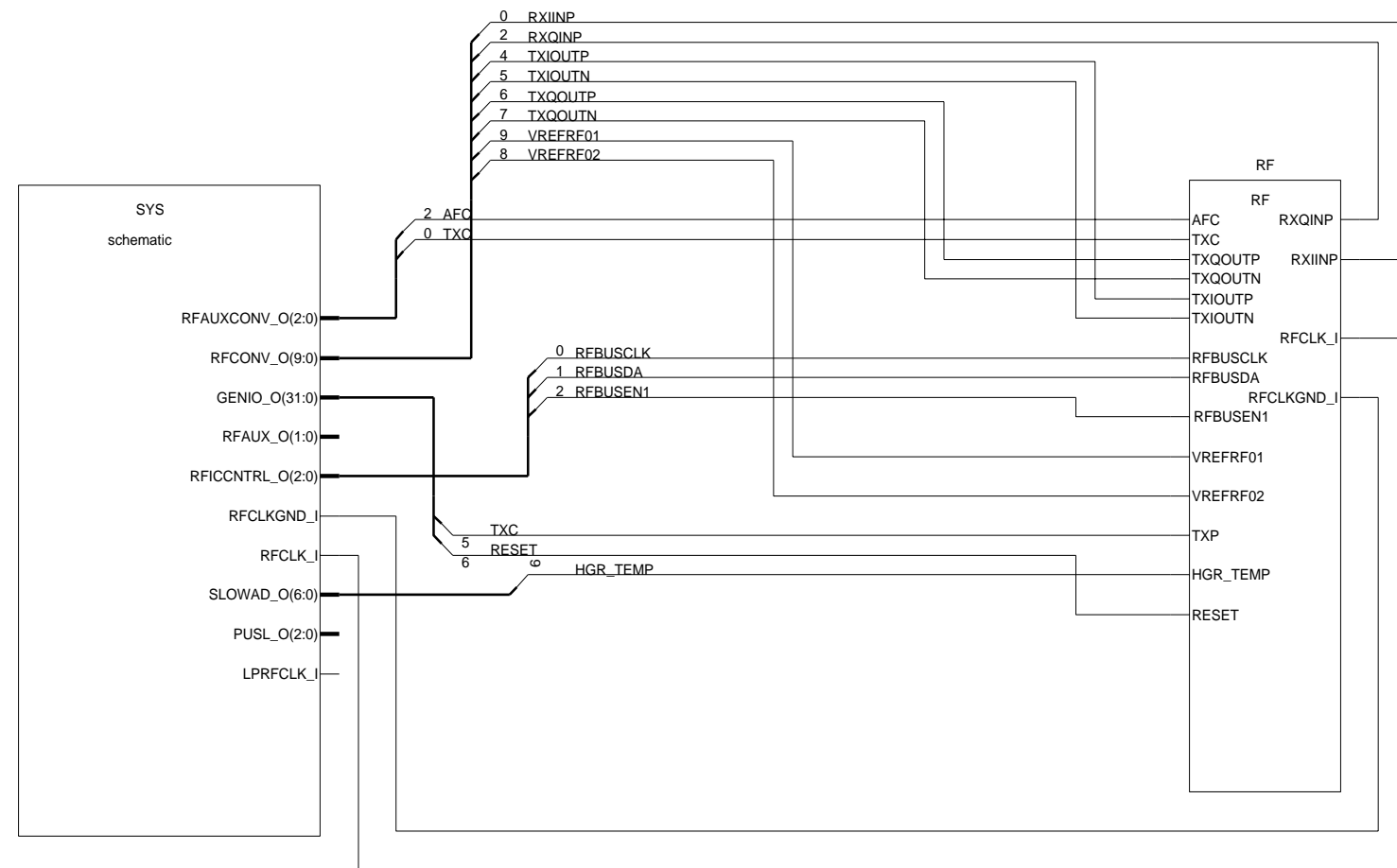
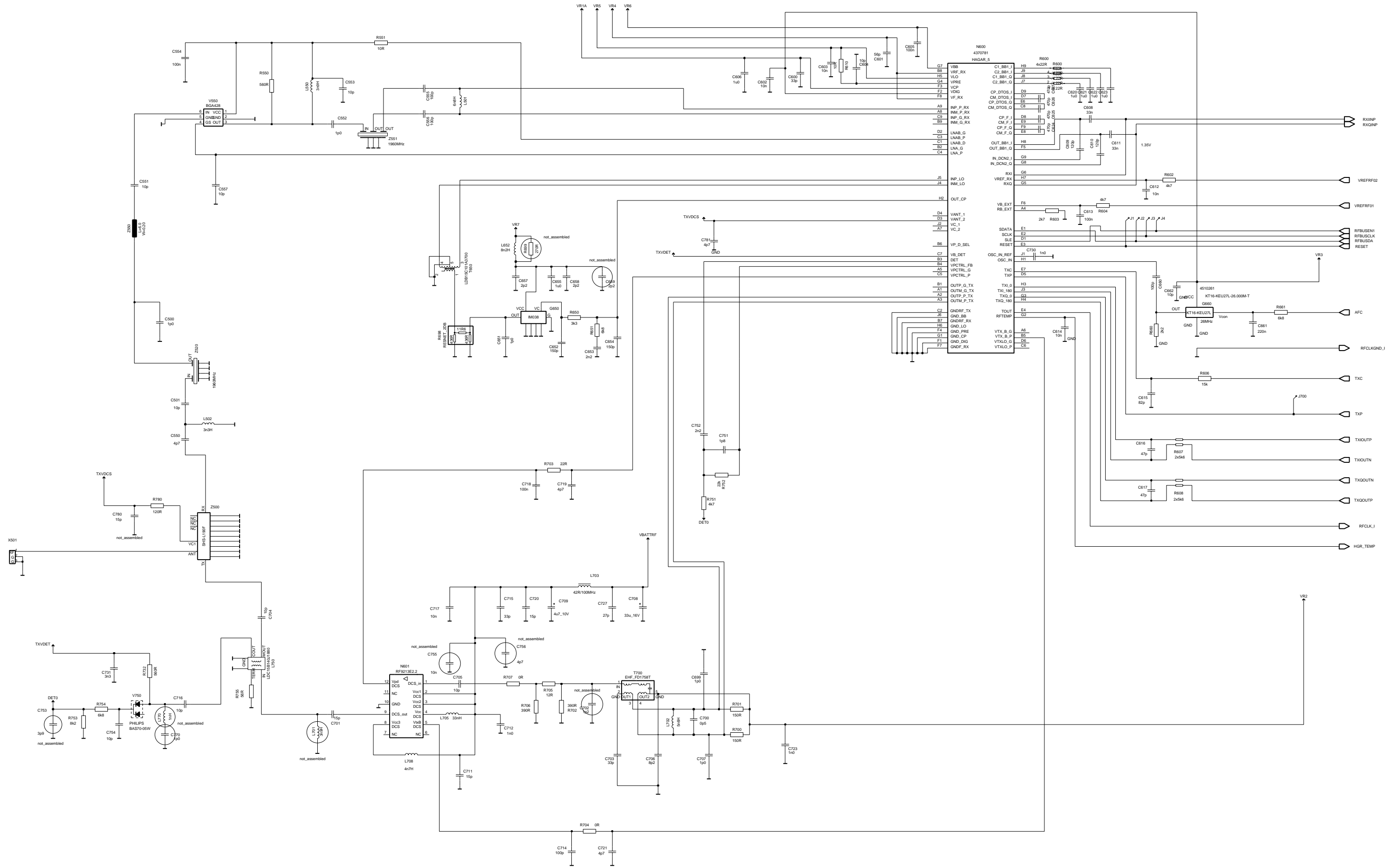


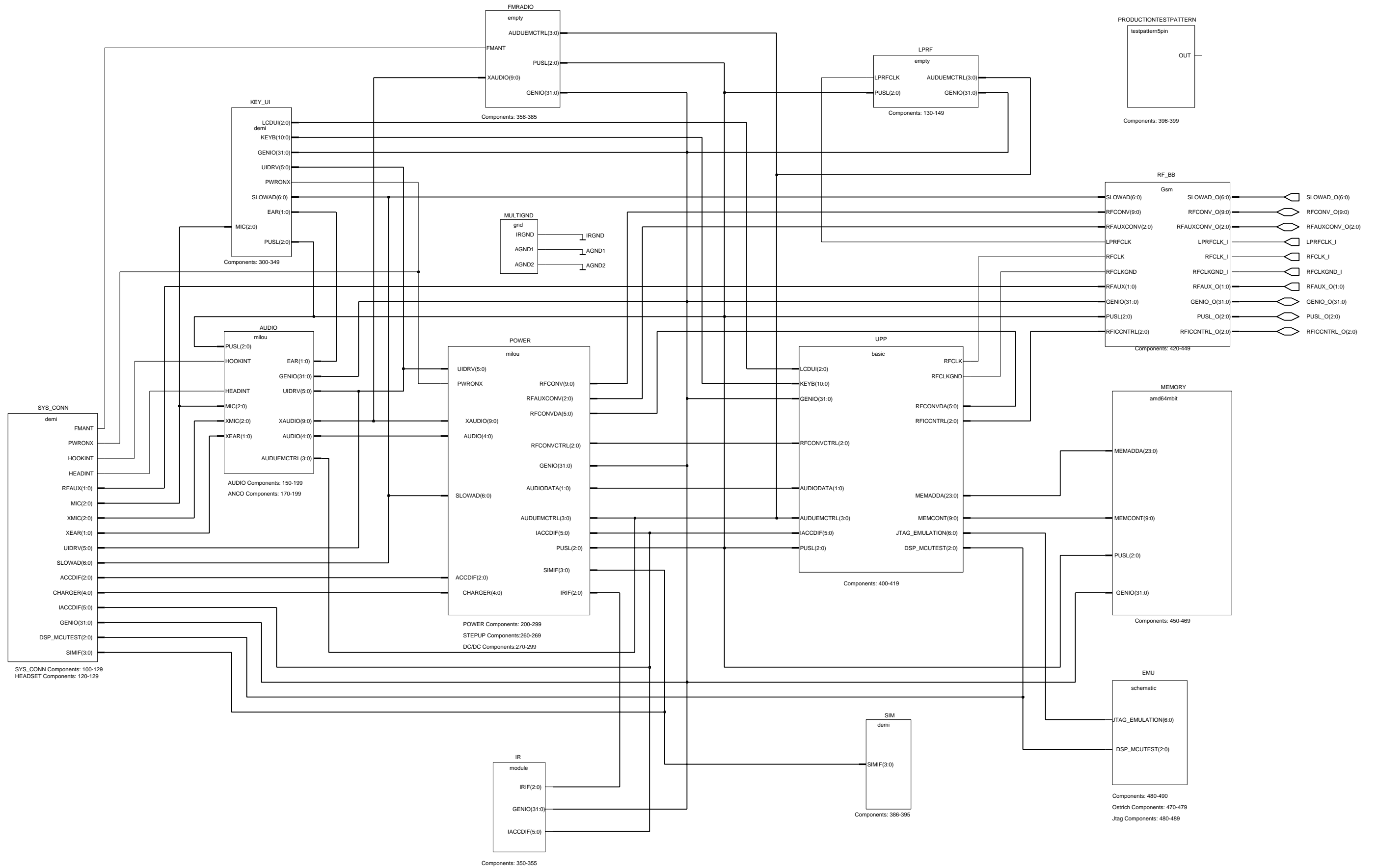
RF & BB (v06.01 ed.66 for layout version 06)



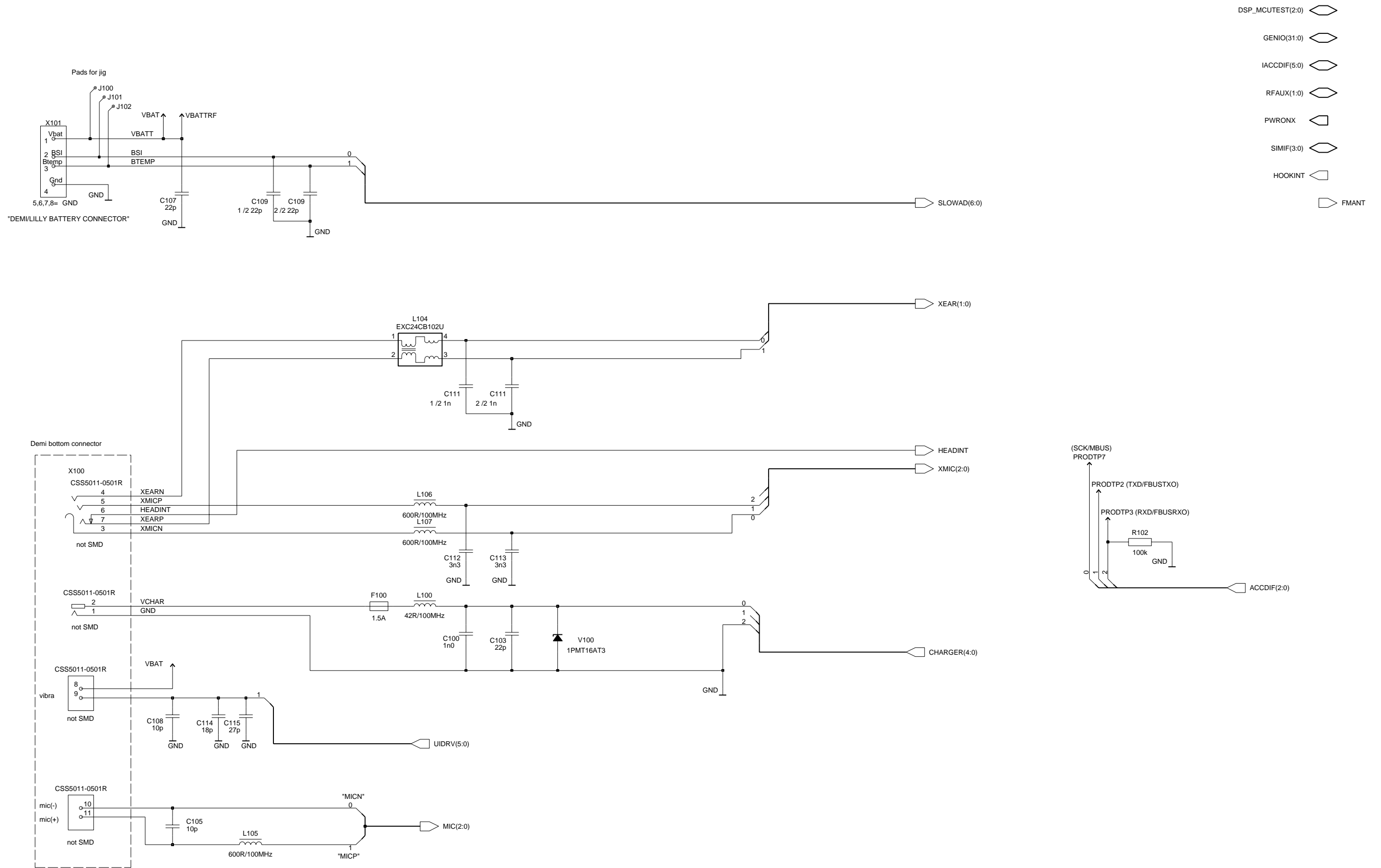
RF (v.06.01 ed.194 for version 06)




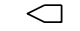



# BB Connections (v.06.01 ed.263 for version 06)

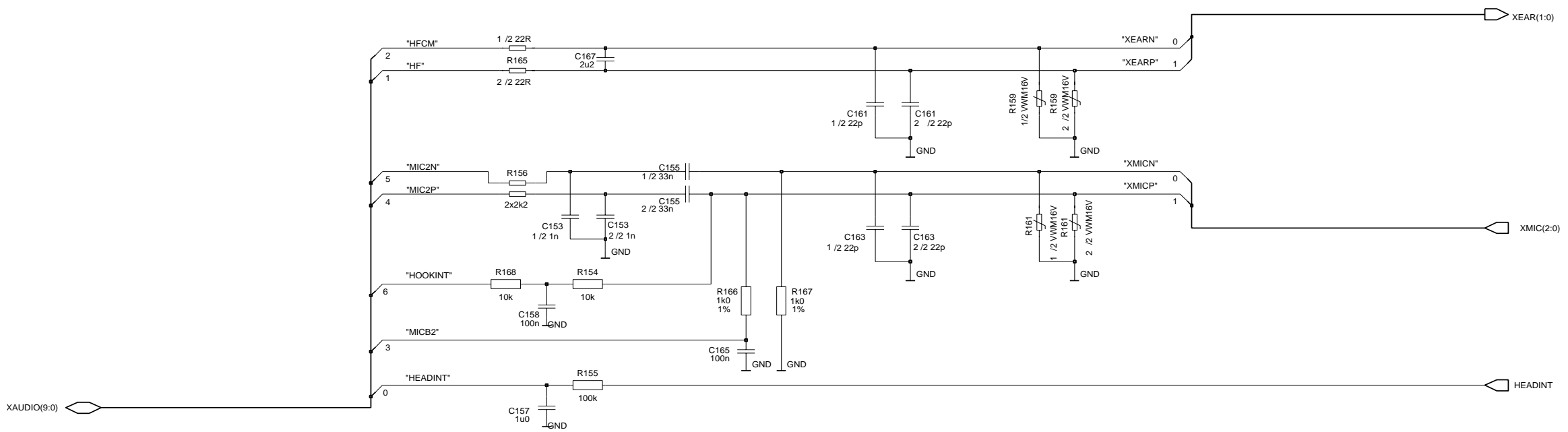
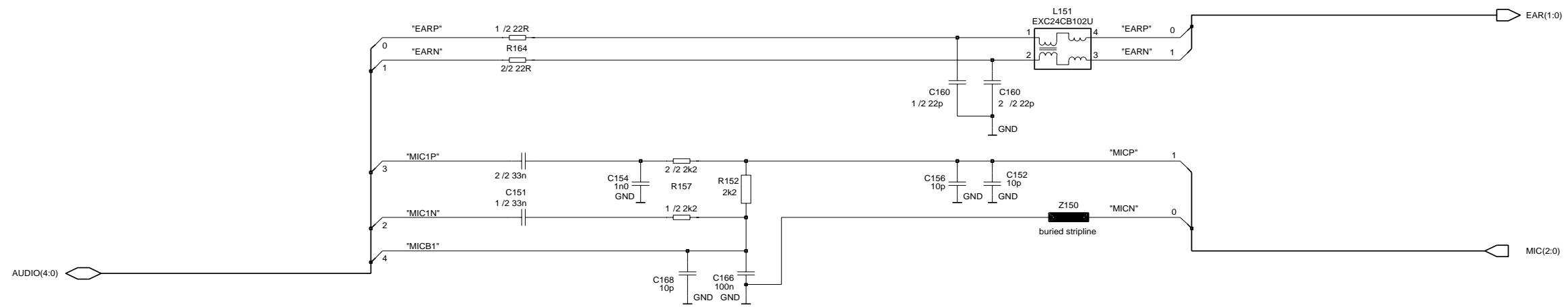


# System Connector (v.06.01 ed.148 for version 06)



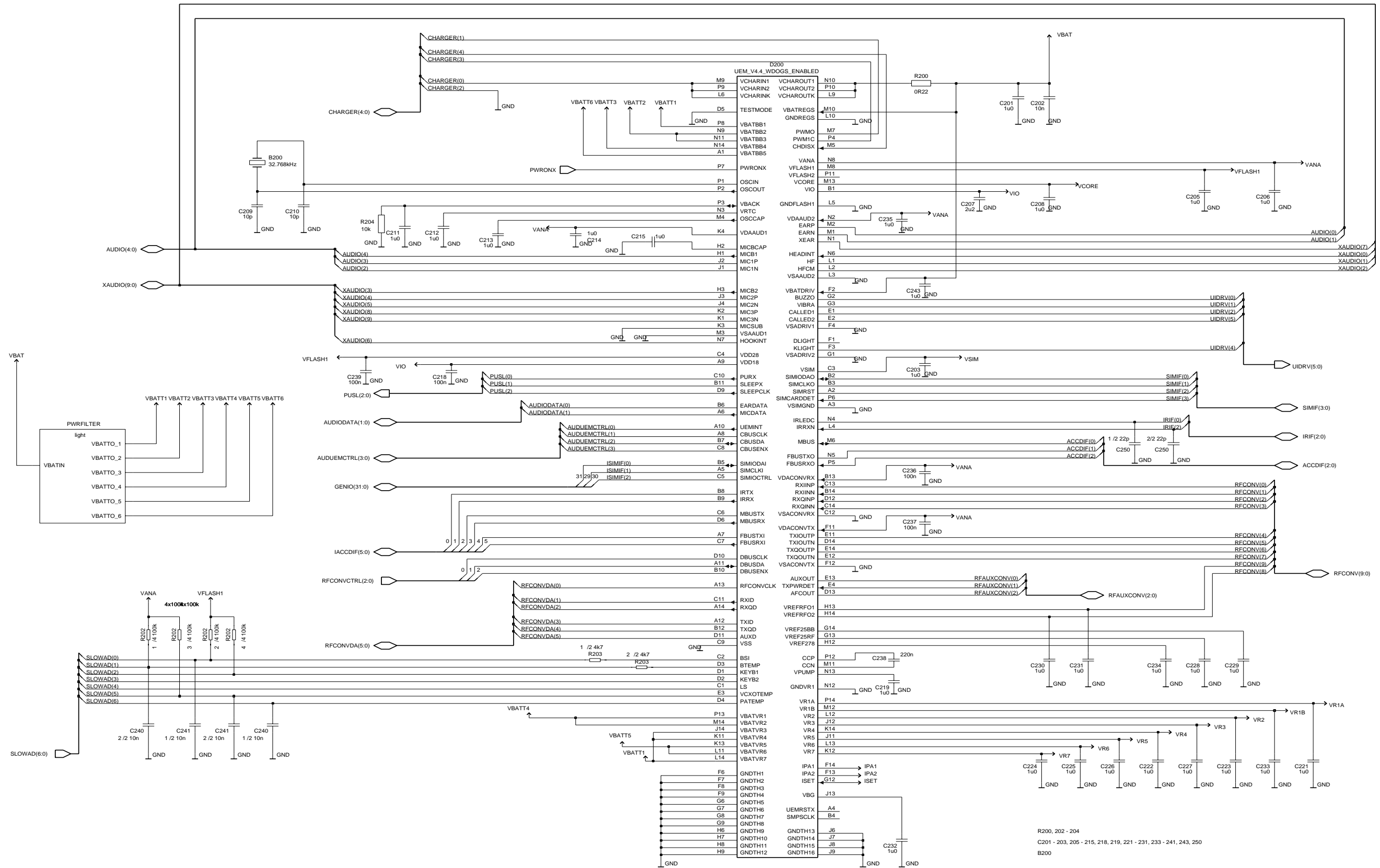
Audio Interface (v.06.01 ed.90 for version 06)

-  GENIO(31:0)
-  PUSL(2:0)
-  UIDRV(5:0)
-  AUDUEMCTRL(3:0)
-  HOOKINT

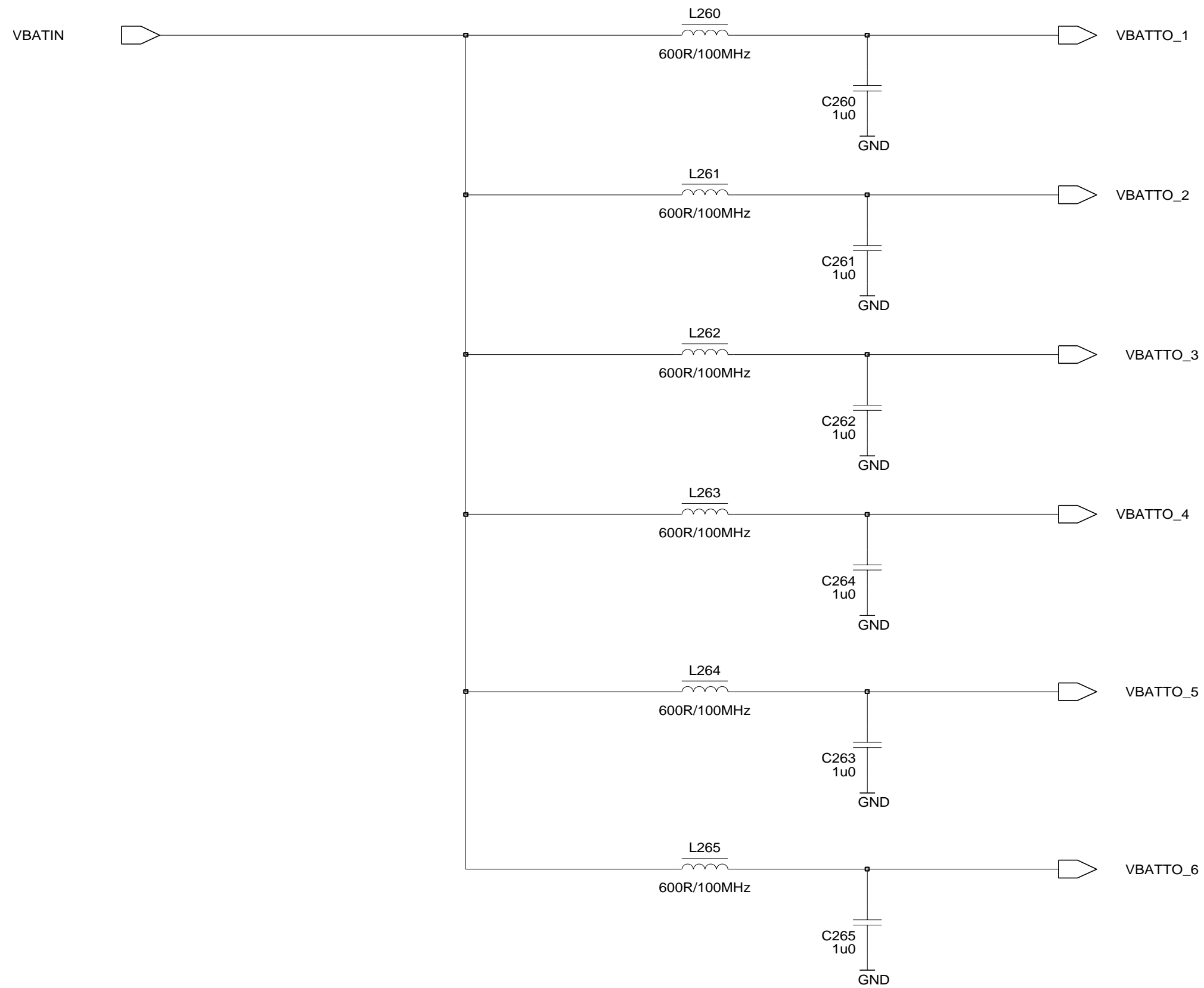


C151 - 158, C160, C161, C163, C165 - 168  
 R152, R154 - 157, R159, R161, R164 - 168  
 L151  
 Z150

# UEM of BB (v.06.01 ed.151 for version 06)



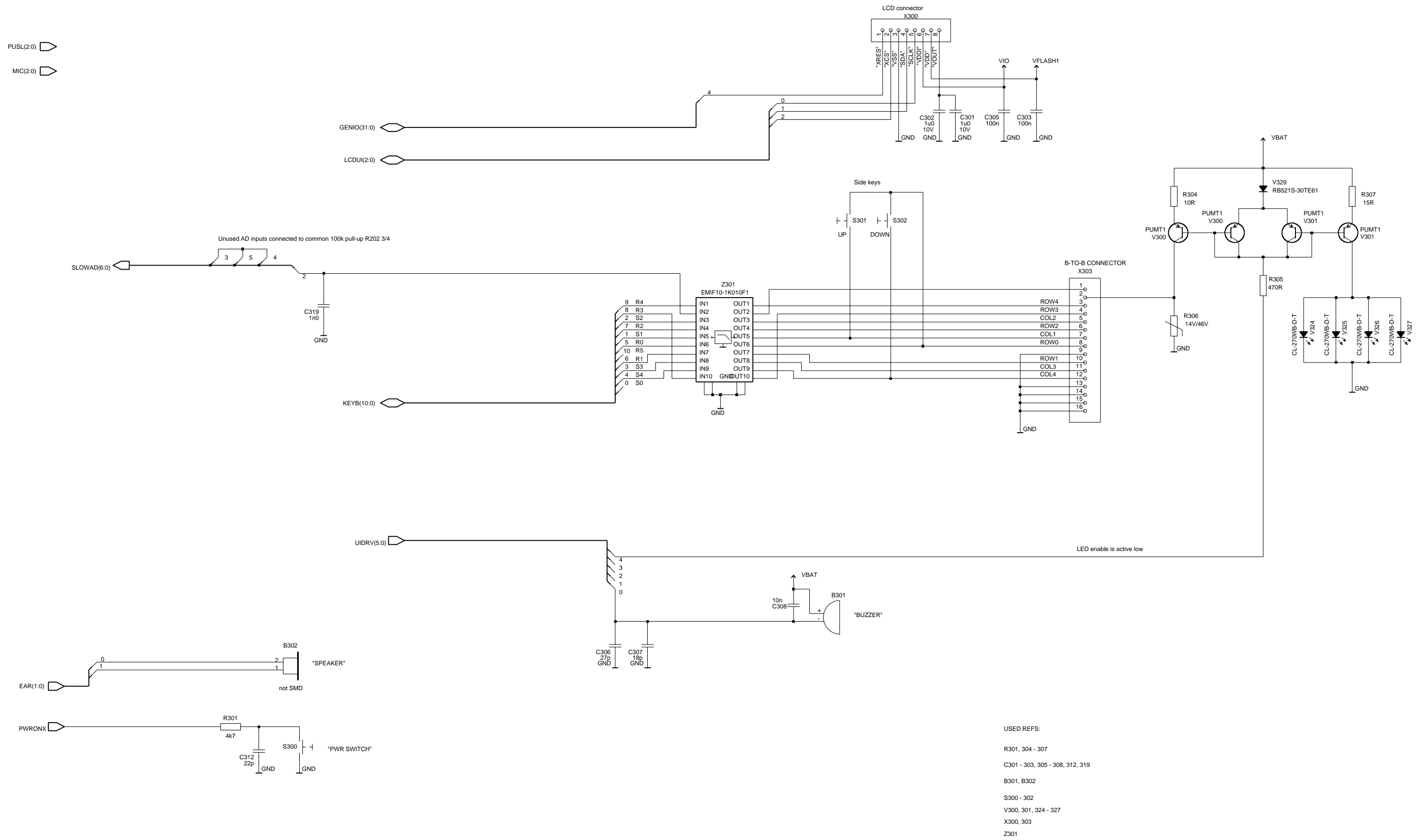
# UEM VBAT Filtering (v.06.01 ed.45 for version 06)



C260 - 265

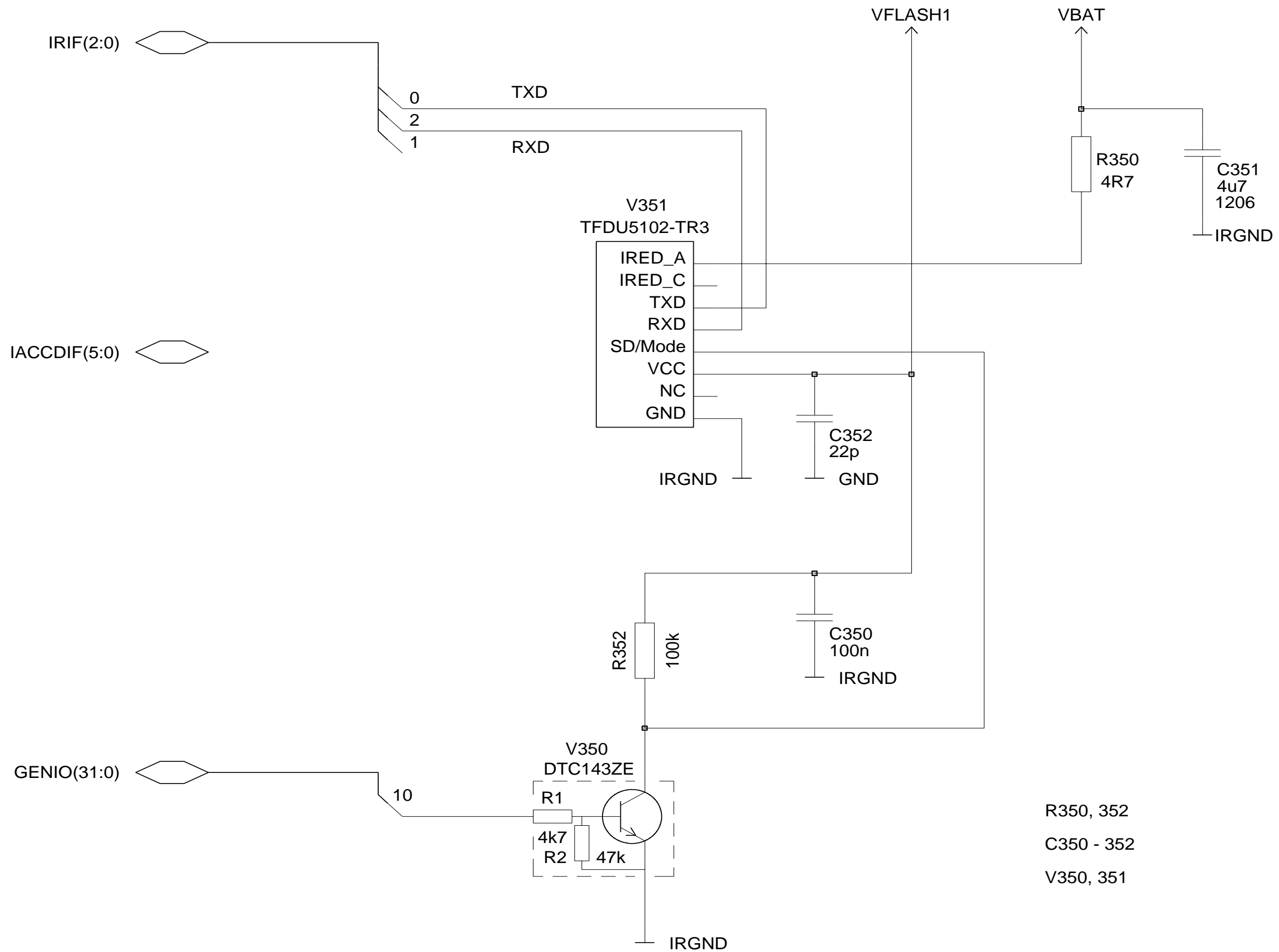
L260 - 265

# Display and Keyboard Interface (v.06.01 ed.201 for version 06)



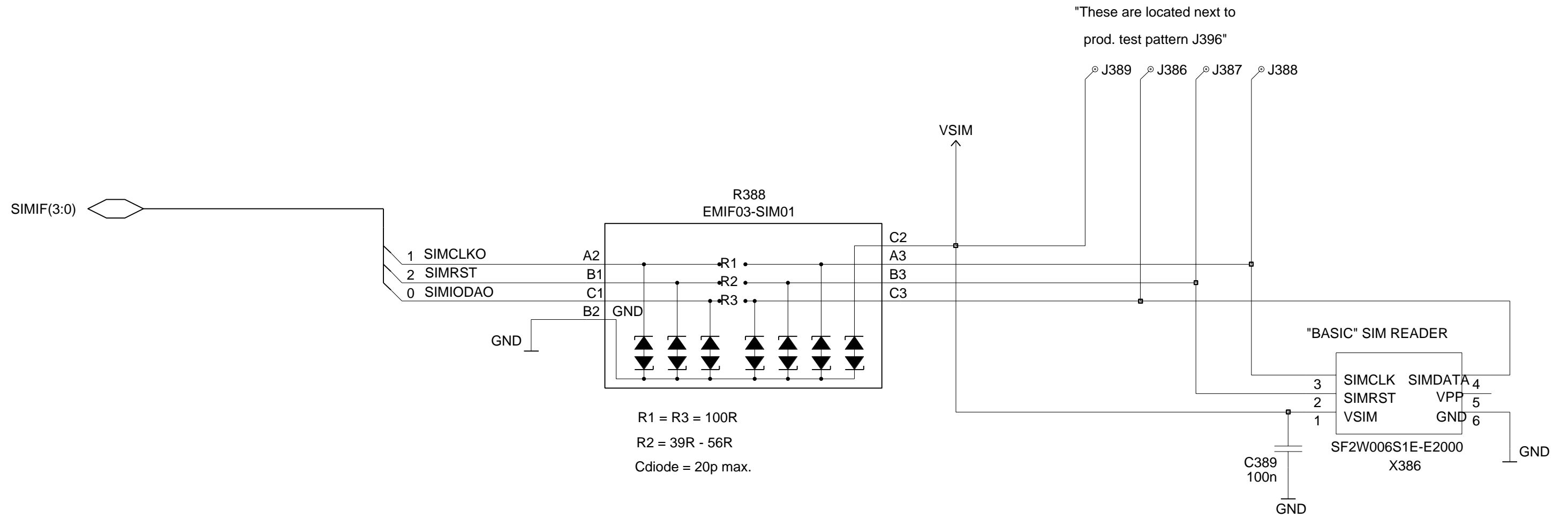


Infrared Module (v.06.01 ed.46 for version 06)



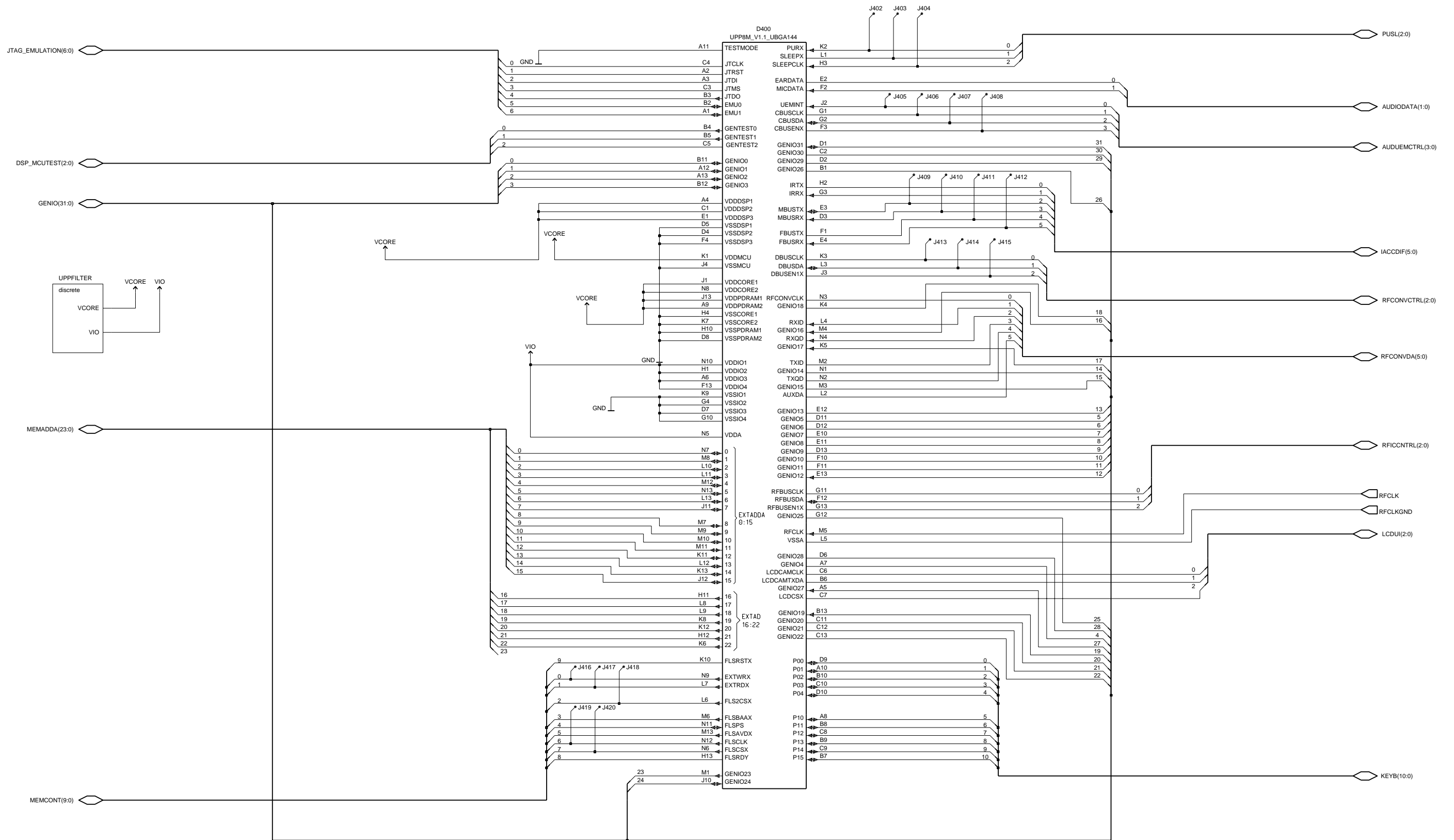
R350, 352  
C350 - 352  
V350, 351

SIM Reader (v.06.01 ed.52 for version 06)

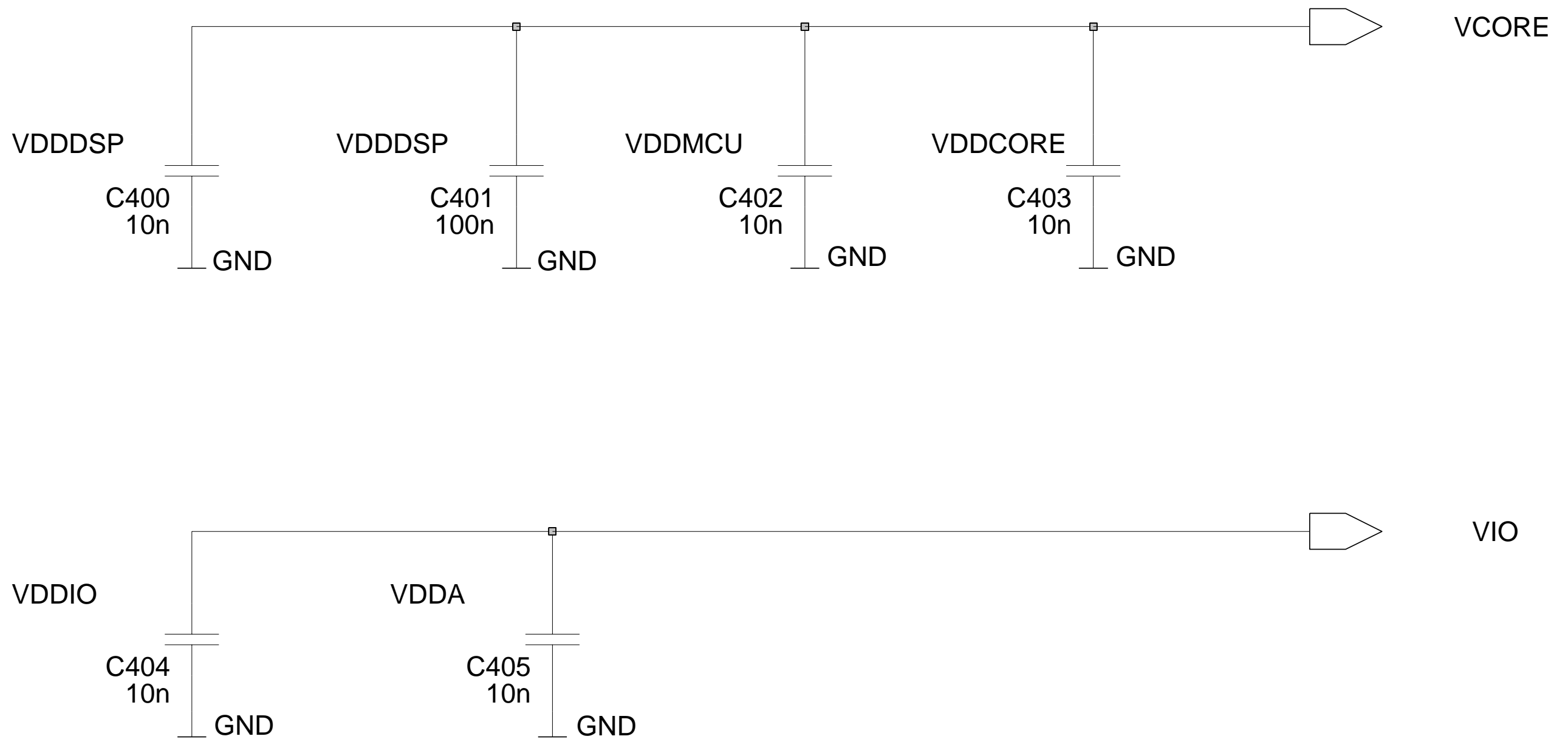


R388  
C389  
X386

UPP of BB (v.06.01 ed.91 for version 06)

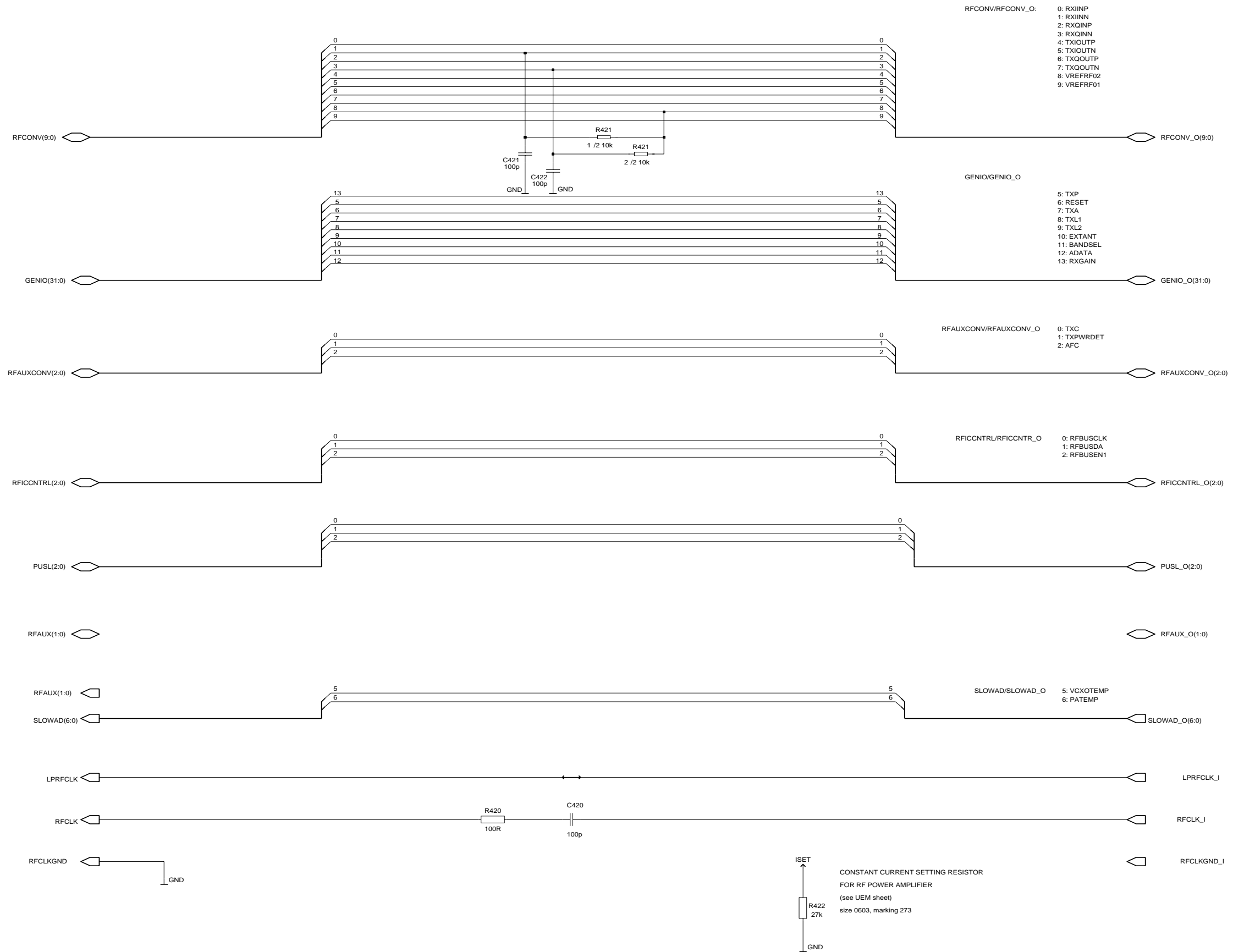


### Decoupling Capacitors of UPP (v.06.01 ed.14 for version 06)



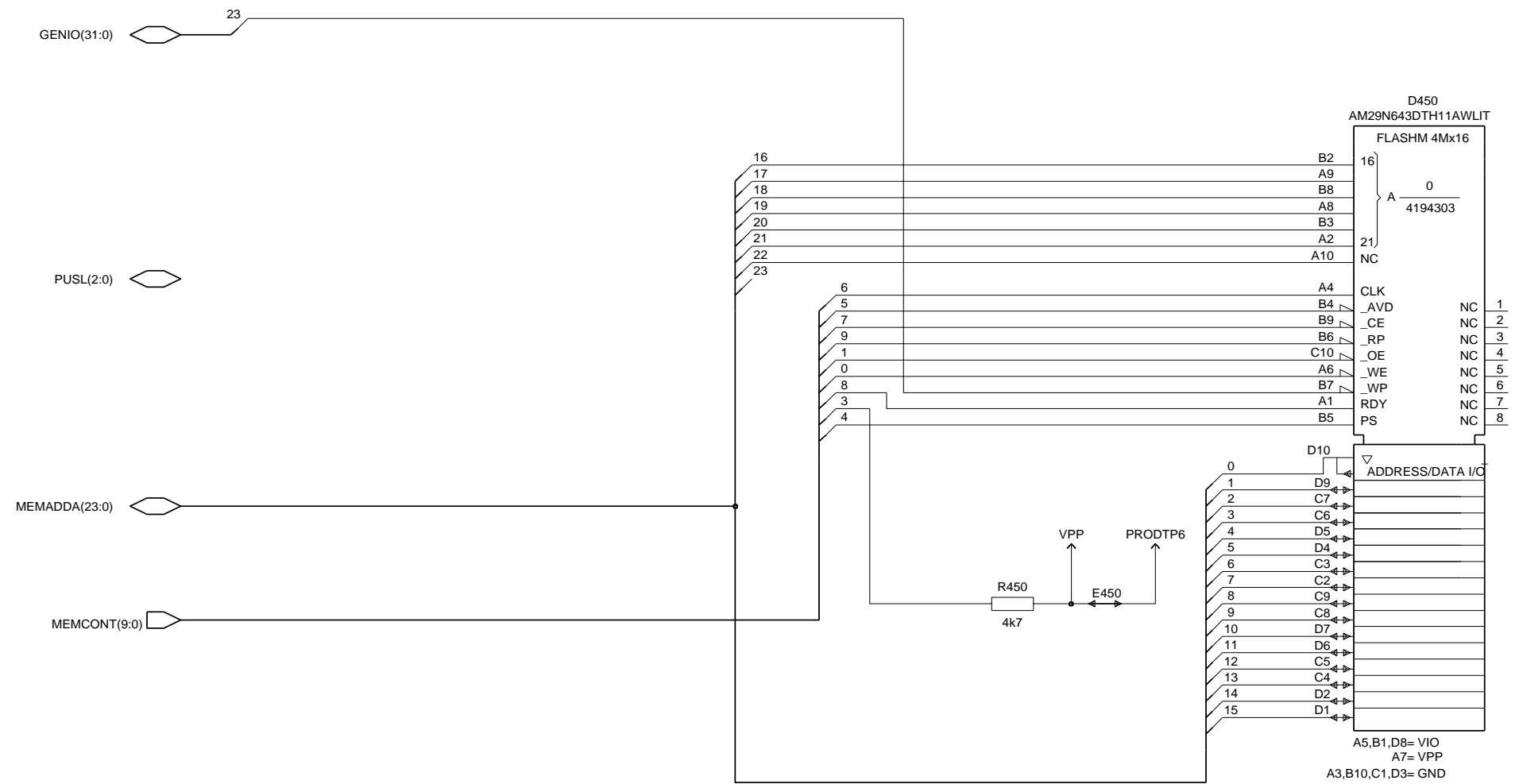
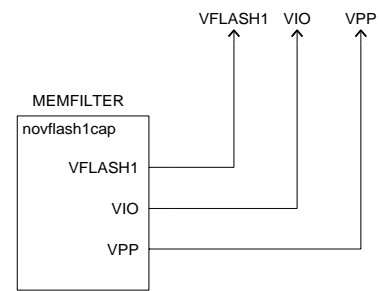
C400 - 405

RF - BB Interface (v.06.01 ed.41 for version 06)

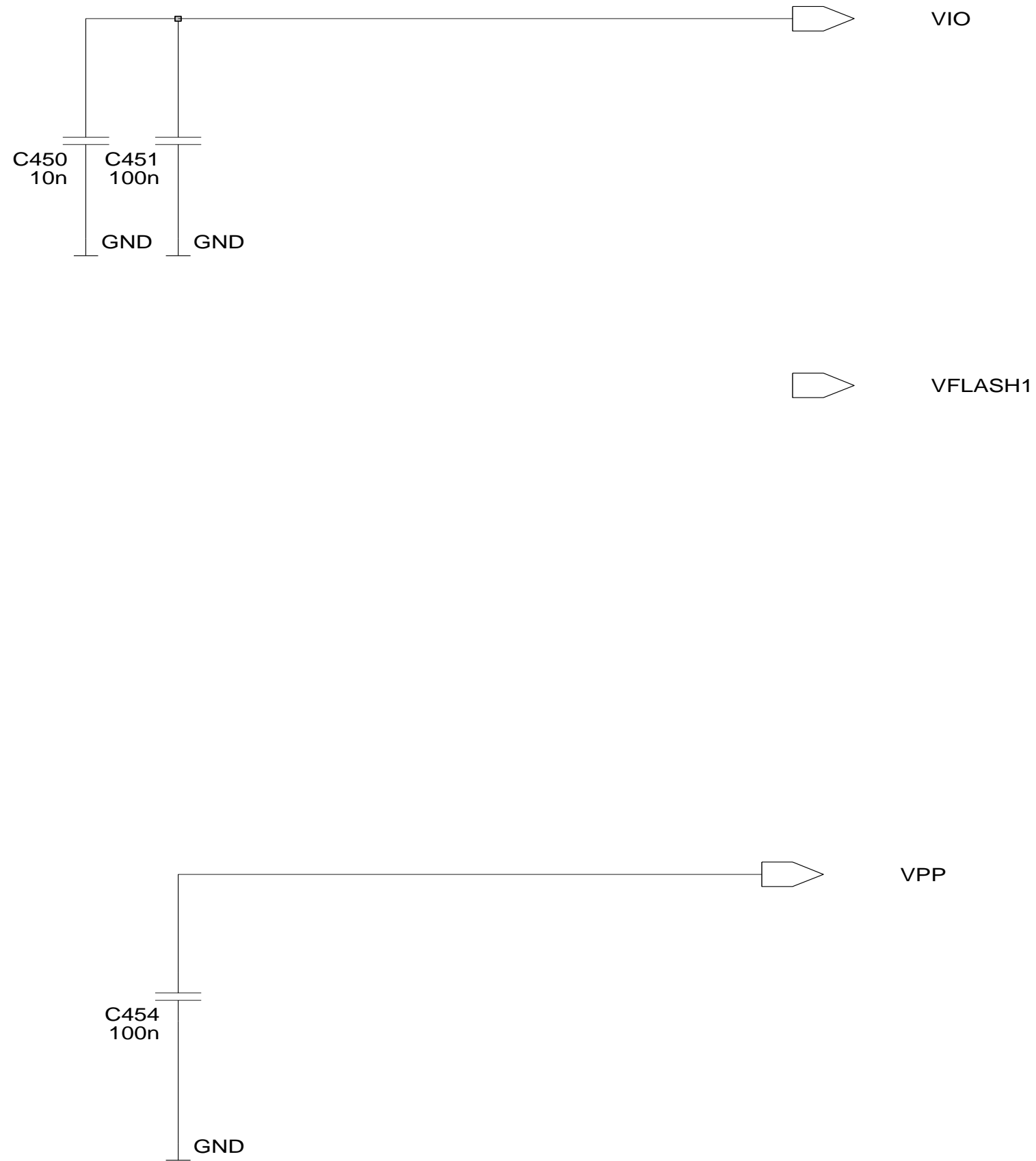


R420 - 422  
C420 - 422

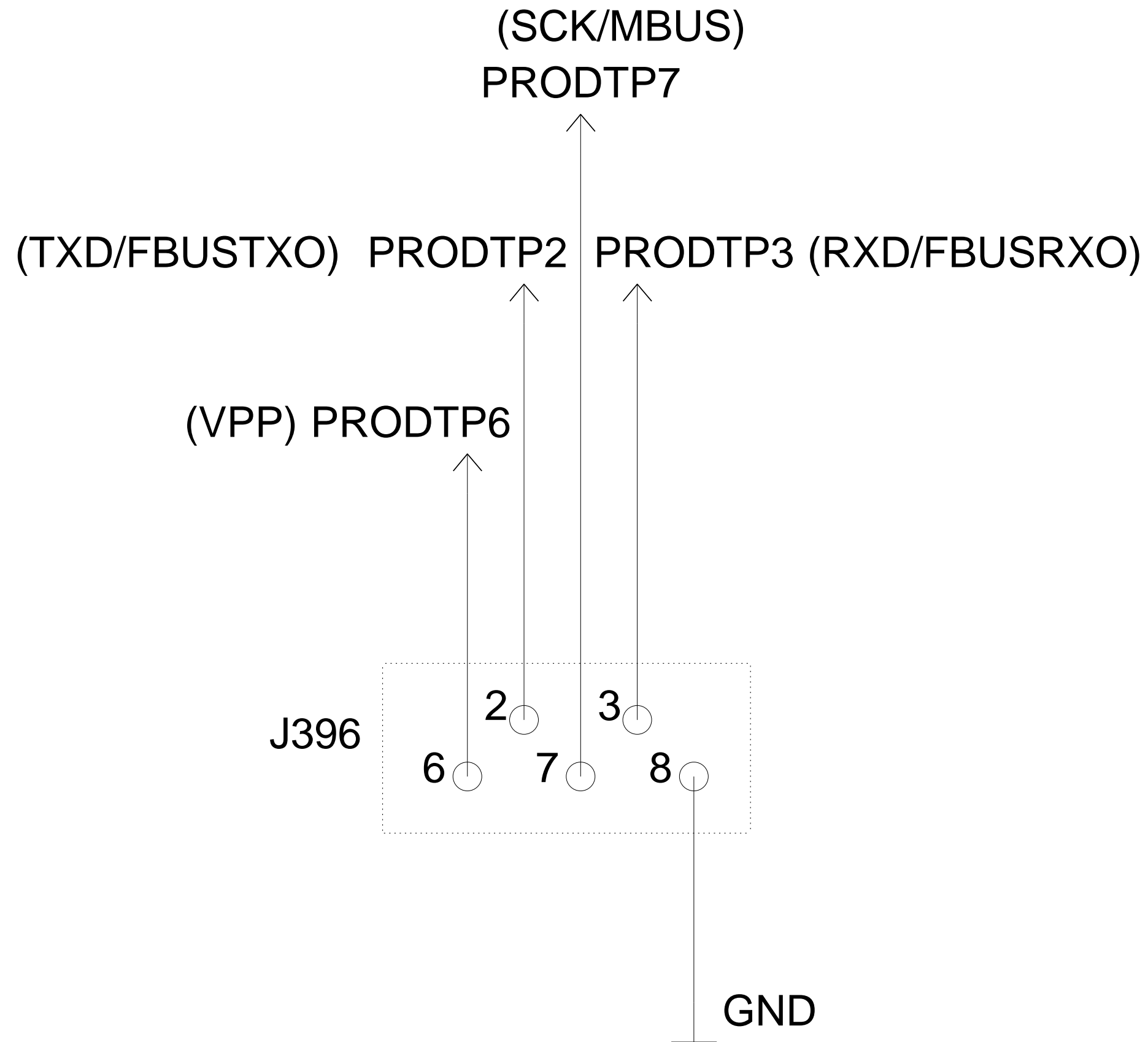
# Flash Memory (v.06.01 ed.38 for version 06)



# Decoupling Capacitors for Flash Memory (v.06.01 ed.14 for version 06)

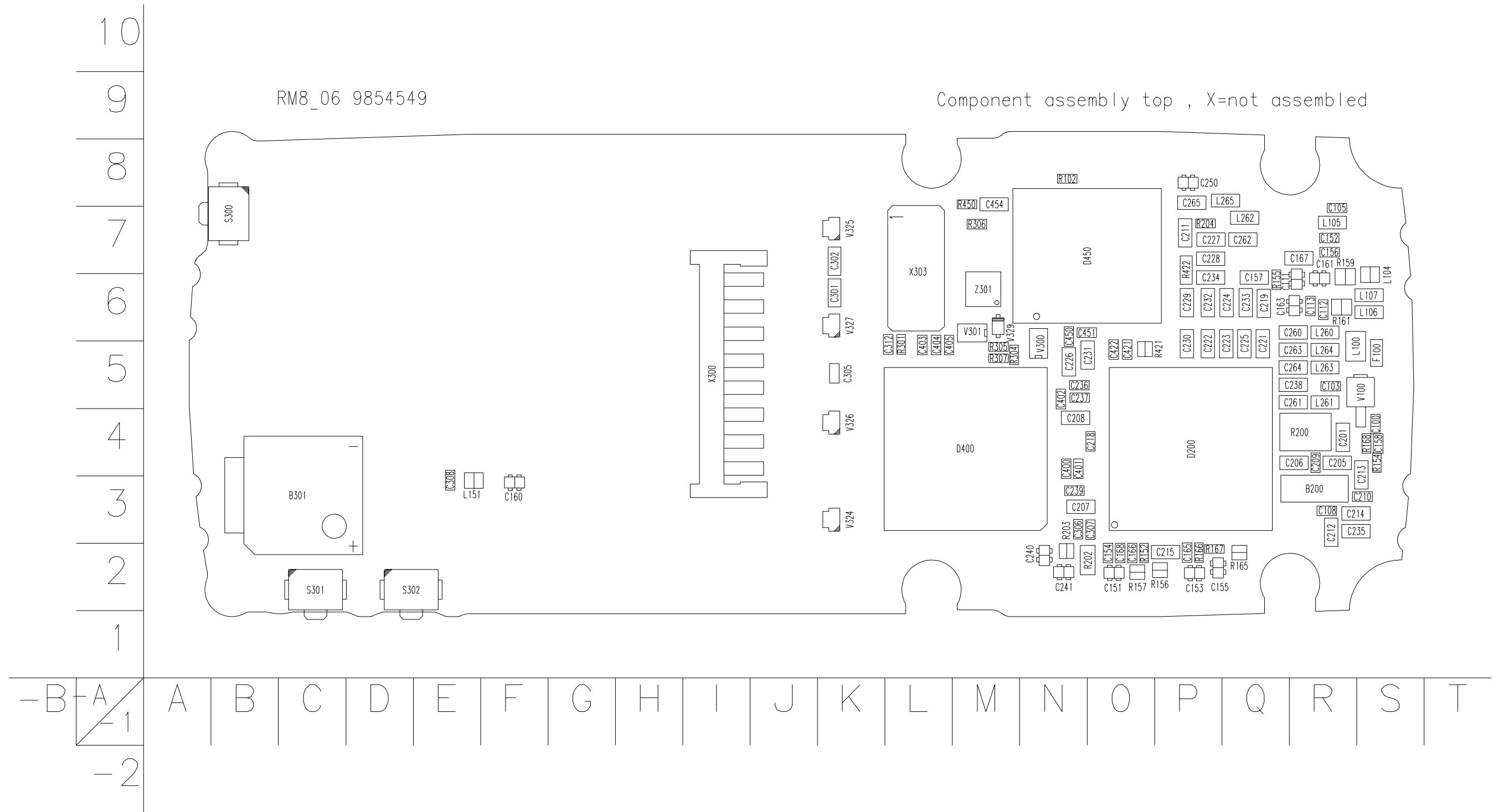


Production Test Pattern (v.06.01 ed.19 for version 06)





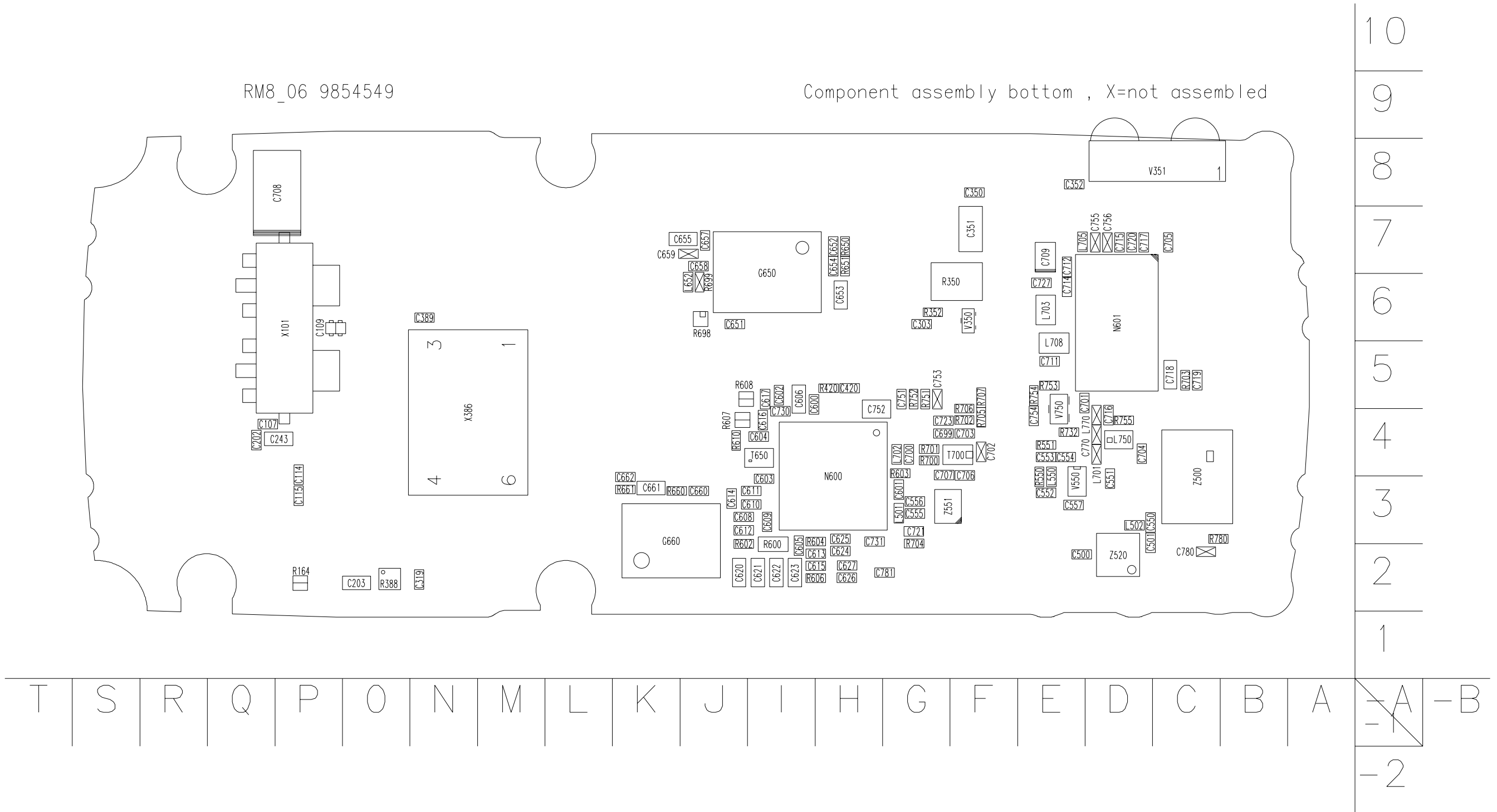
# Layout Diagram of RM8 - Top



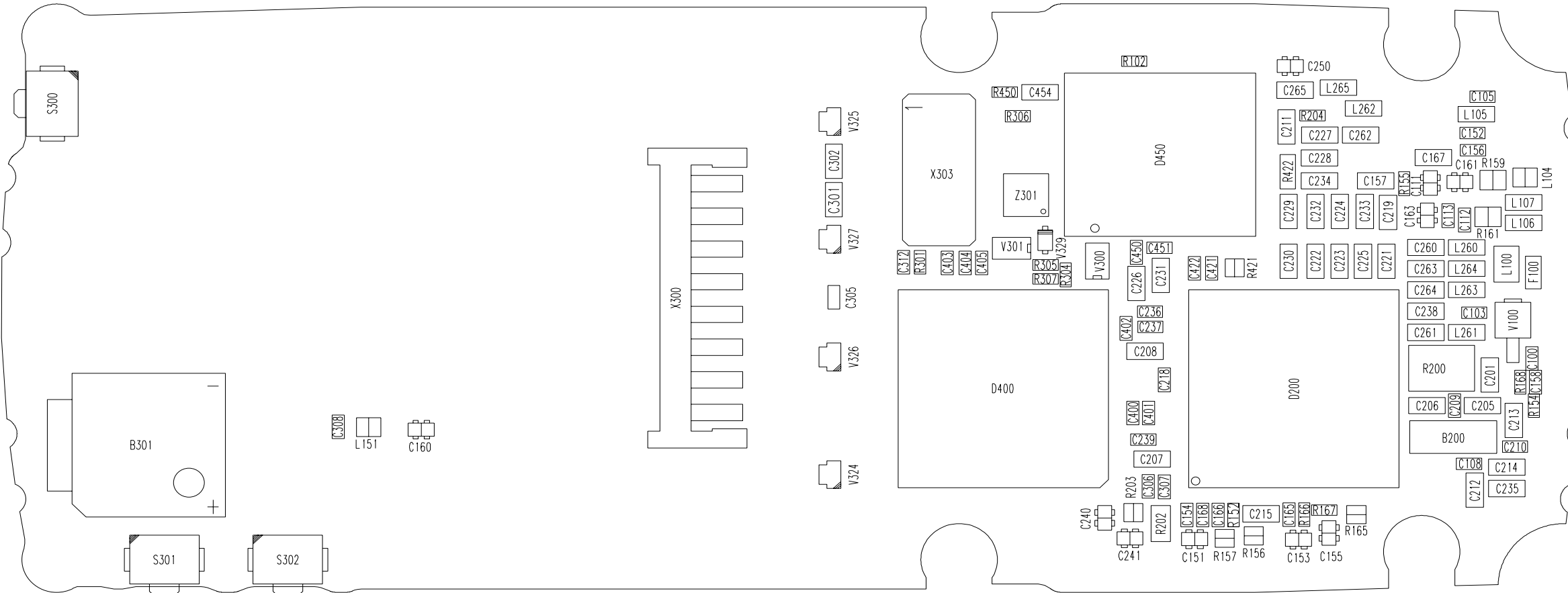
# Layout Diagram of RM8 - Bottom

RM8\_06 9854549

Component assembly bottom , X=not assembled



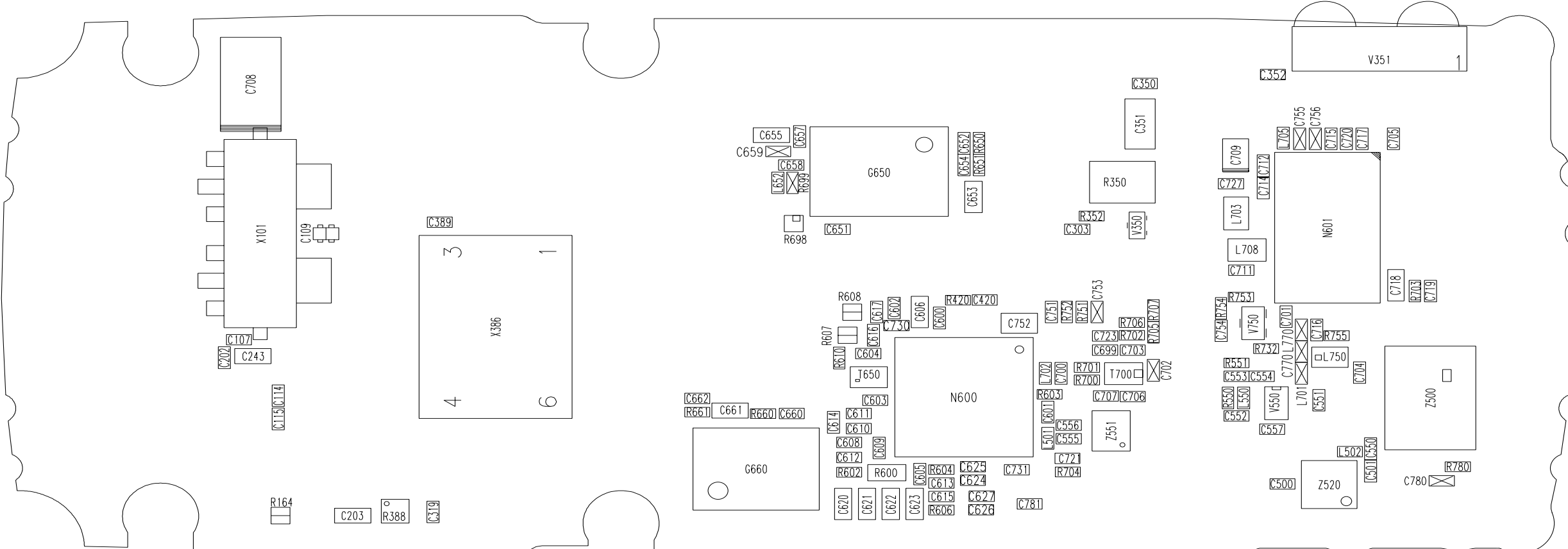
### Testpoints of RM8 - Top



### Testpoints of RM8 - Bottom

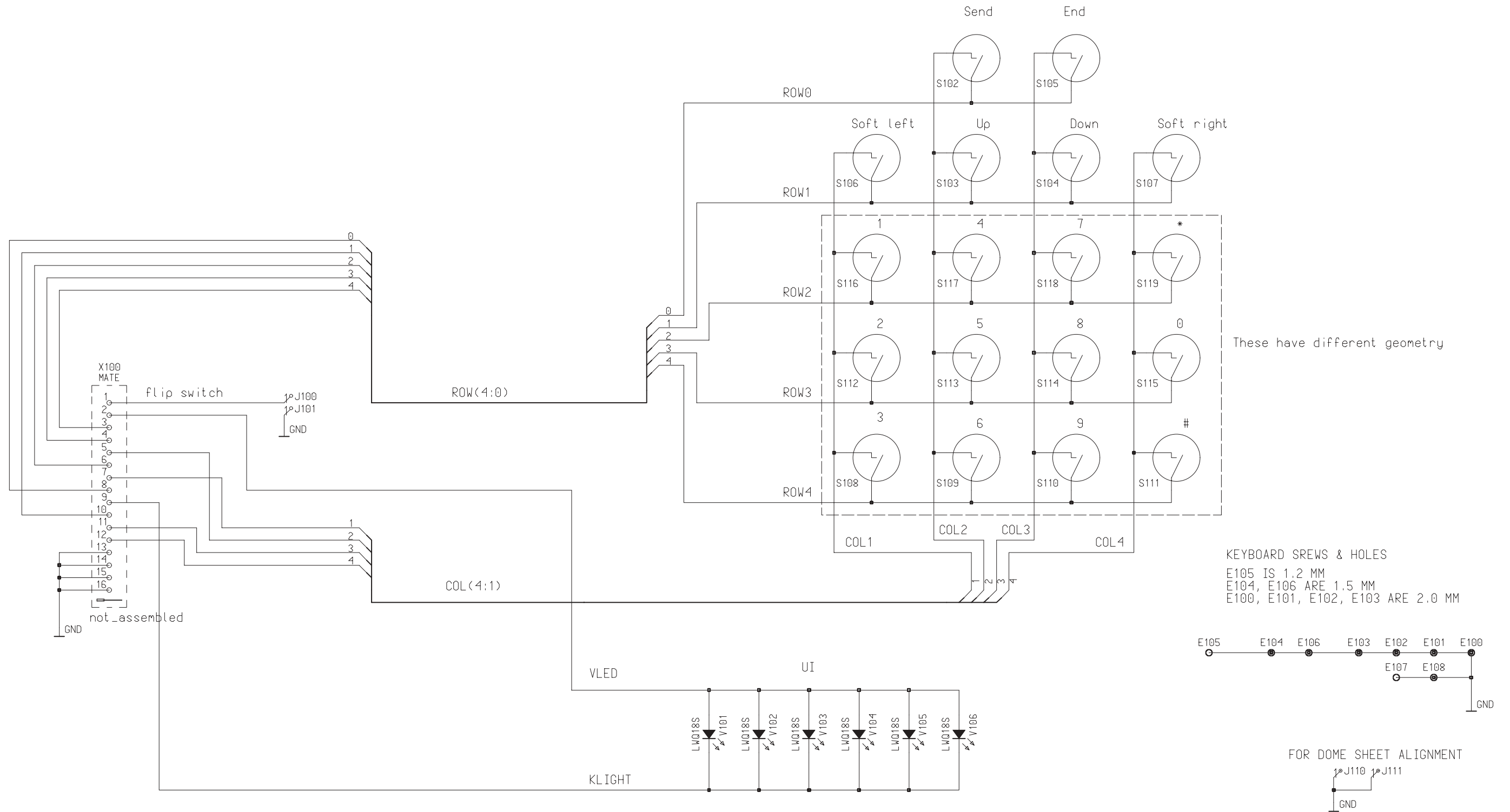
RM8\_06 9854549

Component assembly bottom , X=not assembled

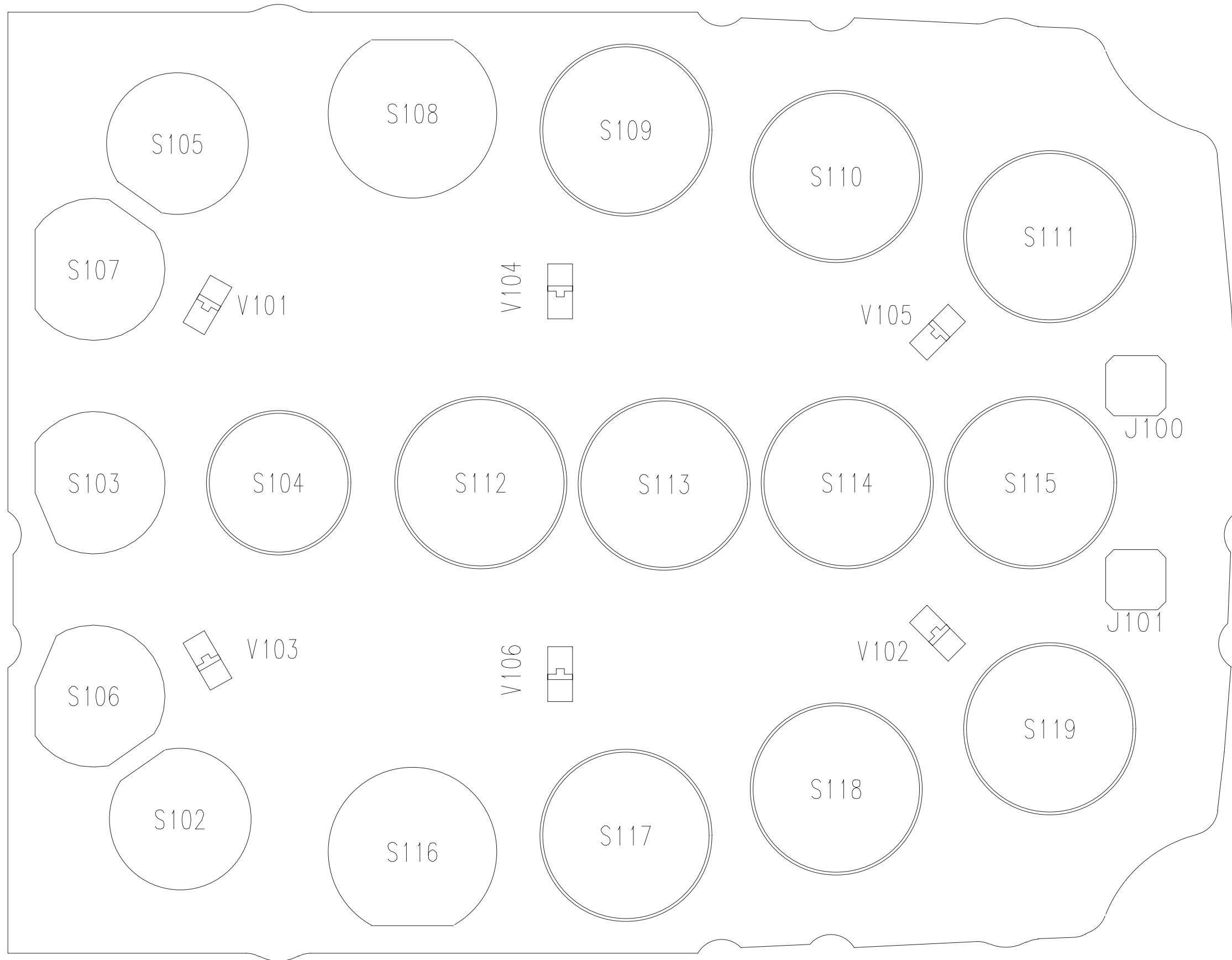




UI Board - LK5

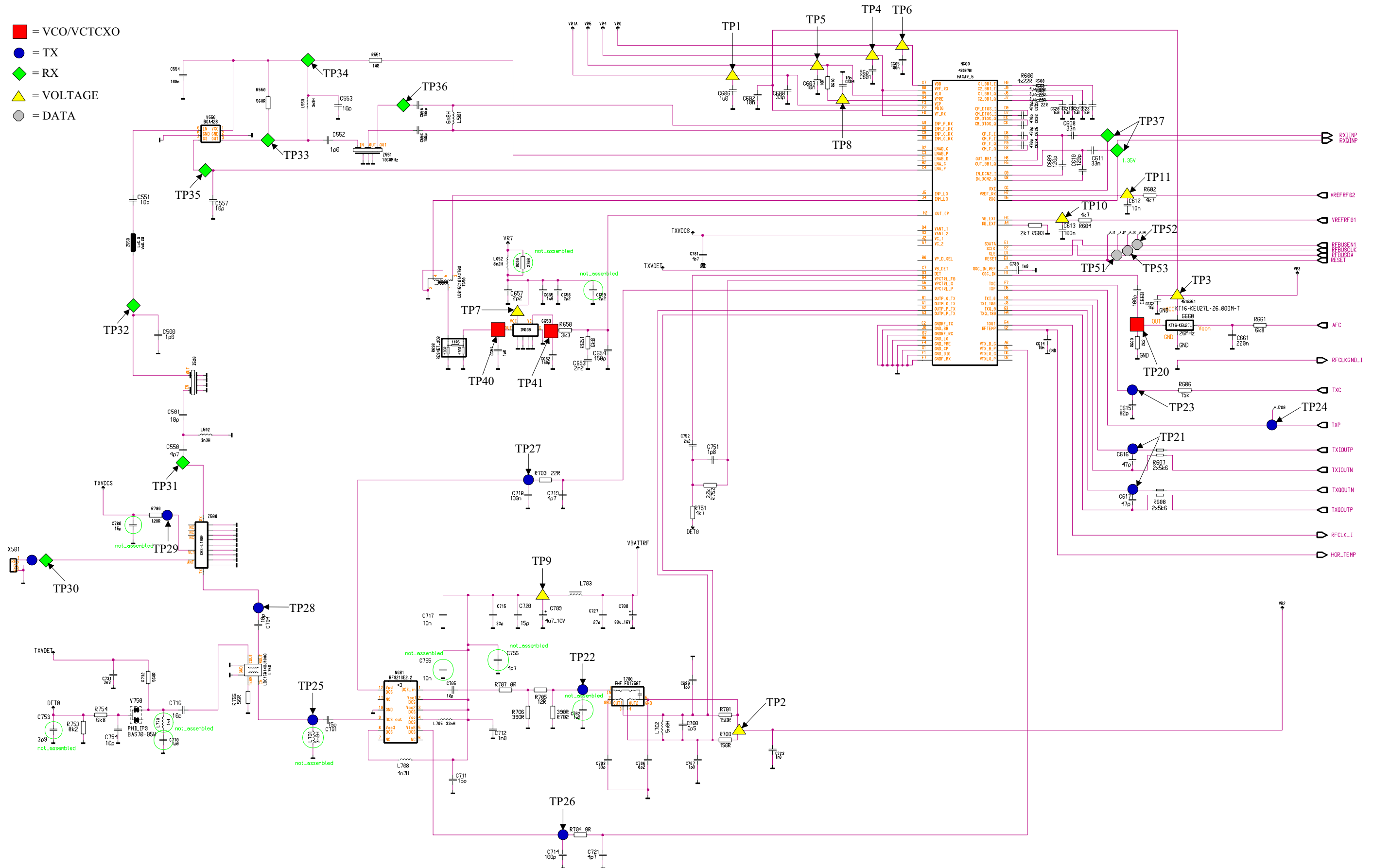


# Layout Diagram - LK5



# RF Testpoints diagram

- = VCO/VCTCXO
- = TX
- ◆ = RX
- ▲ = VOLTAGE
- = DATA



# RF Testpoints - PWB layout

## Measurements points for AMS and production repair

RM8\_06

Component assembly bottom , X=not assembled

